



# HIGH PERFORMANCE FOLDING ANCHOR

## ANKERPLEX®

KEEPING THE POSITION



### ANKERPLEX®, THE MOST SIMPLE AND EFFECTIVE ANCHOR IN THE WORLD:

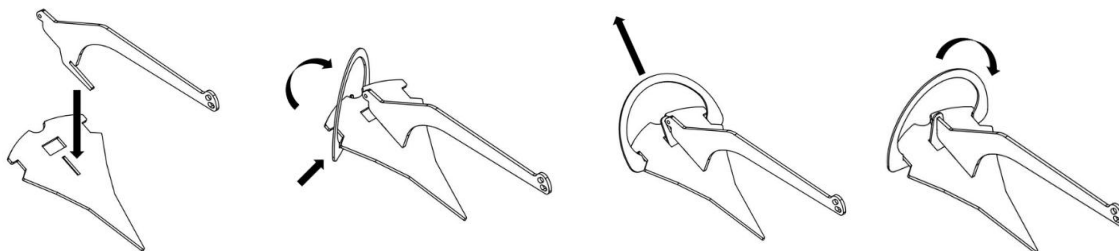
ANKERPLEX is a modern anchor that offers high holding power (HHP), instant setting, and great repositioning capability when wind or tide changes.

ANKERPLEX allows it to be stowed on board effectively, taking up little space thanks to its unique flat design, and at the same time, **it can be deployed very quickly** when necessary.

ANKERPLEX can go from its stowage place to operational mode in record time, **without the intervention of any tool, through simple and error-free manual assembly.**

ANKERPLEX is the anchor made with the least manipulation on the market. It is manufactured from sheet metal and **without bending, welding or fixing screws**, to obtain maximum safety and a competitive price.

ANKERPLEX consists of three top-quality standardized flat sheet metal pieces designed in such a way that with a simple coupling between them, and its securing with a shackle arranged at the end, the assembly is quickly constituted in a solid and self-contained three-dimensional unit, fully effective in terms of positioning, speed of penetration into the seabed, holding capacity and resetting in trajectory changes. **ANKERPLEX has no moving parts, which prevents any possibility of blockage during use or damage when handling.**



ANKERPLEX is ideal as a main anchor or as a second unit, either as an Auxiliary Anchor (Kedge Anchor), Storm Anchor or as Spare Anchor, since its usefulness on board is unquestionable.

## TECHNICAL FEATURES:

Ankerplex is manufactured and marketed in **different sizes** to meet the anchor needs of all types of boats: from kayaks, jet skis or small boats, to sailboats and yachts over twenty tons. The manufacture is carried out from standard metal sheets, through high-precision robotic cutting and with surface finish treatment. No welding or folding process is involved in manufacturing the Ankerplex anchor, which guarantees that its characteristics remain unchanged for life.

Ankerplex is supplied in **STAINLESS STEEL, ALUMINIUM** and **HOT - DIP GALVANIZED STEEL** versions to meet your specific needs:

**AISI 304 STAINLESS STEEL** models, through **electropolishing treatment**, easily meet the requirements of resistance required in saline environments while obtaining an impeccable and very durable gloss finish.

The **ALUMINIUM** models are manufactured using **Al-Mg MARINE GRADE PLATE AL5083 and AL5754** to obtain adequate mechanical resistance, lightness and durability with **anodized finish**, ideal for use as auxiliary anchors for occasional or intermittent use, as gear for racing boats, seaplanes,...or any use where the low weight is an added value.

The **HOT-DIP GALVANIZED STEEL** option is offered as a low-cost, robust unit with good corrosion protection, ideal as a main anchor, kedge, or replacement spare anchor.

All Ankerplex production are examined and controlled unit by unit by expert personnel.

## ANKERPLEX ® ACCESSORIES

**Transport and stowage bag:** You can stow or transport your folded Ankerplex in a resistant synthetic bag of the appropriate size for each model. Ideal complement to your Ankerplex.  
Available in five sizes:

**Ref. AB1:** For AP1 model

**Ref. AB2:** For AP5 and AP8 models

**Ref. AB3:** For AP11 and AP16 models

**Ref. AB4:** For AP20 and AP27 models

**Ref. AB5:** For AP31, AP50 and AP60 models



**Anchoring line "Ankerplex Flat Line":** For smaller boats (dinghies, kayaks, auxiliary boats, jet skis...) made of 15 mm flat PES polyester tape with a high load capacity (breaking capacity over 500 kg), and resistance to sun and marine environment. Length 25 meters + 3 meters of 4 mm galvanized chain, including a 5 mm connection shackle and useful winding reel. Because it is a flat tape, it can be rolled up easily, occupying little volume. The AFL25 is supplied in fluor orange, making it easy to see. Also ideal as emergency anchoring equipment on smaller boats.

**Ref. AFL25 – Anchor line**

## WARRANTY

The Ankerplex anchor is manufactured with a rigorous quality control process from selected materials and is also checked by specialists on a unit-by-unit basis. However, during a period of 5 years from the date of acquisition, the manufacturer will be responsible for the replacement of the unit or any of its components in the event of any defect that is attributable to a failure or deficiency of the materials used, or its manufacturing process

INTERNATIONAL TRADE MARK "ANKERPLEX" 1734706  
INTERNATIONAL PATENT: PCT/ES2023/070416  
MADE IN SPAIN – EU

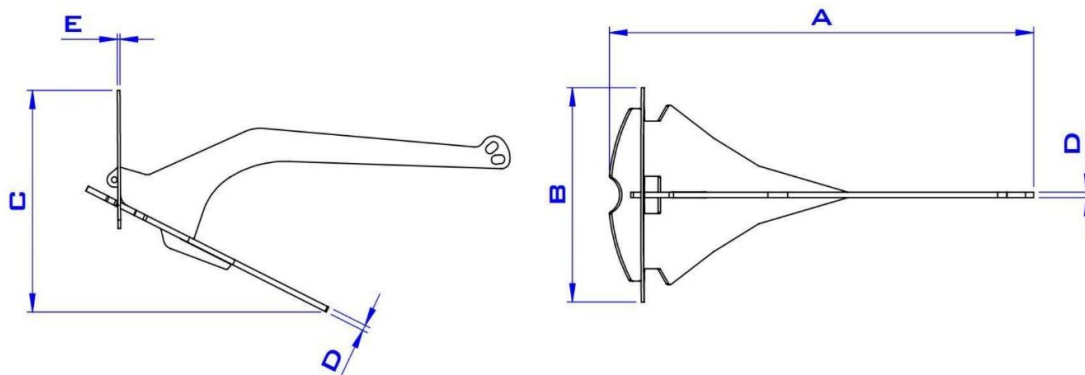
## DISTRIBUTOR:

### CONTACT:

ANKERPLEX  
C/ Pi y Margall 117 – bajo  
36202 VIGO  
(SPAIN)  
Telf. : (34) 986470077  
info@ankerplex.eu  
[www.ankerplex.eu](http://www.ankerplex.eu)



## MEASUREMENTS BOARD



MODEL	MATERIAL	WEIGHT (KG)	SURFACE (CM <sup>2</sup> )	SHACKLE	A (MM)	B (MM)	C (MM)	D (MM)	E (MM)
AP1ST	STAINLESS STEEL	1,5	203	Ø4	412	199	206	5	3
AP1GZ	HOT-DIP GALVANIZED	1,5							
AP5ST	STAINLESS STEEL	5,1	429	Ø6	595	291	301	8	4
AP5GZ	HOT-DIP GALVANIZED	5,0							
AP5AL	ALUMINIUM	1,7							
AP8ST	STAINLESS STEEL	8,0	541	Ø6	664	325	335	10	5
AP8GZ	HOT-DIP GALVANIZED	7,8							
AP8AL	ALUMINIUM	2,6							
AP11ST	STAINLESS STEEL	11,4	774	Ø8	794	389	402	10	5
AP11GZ	HOT-DIP GALVANIZED	11,2						12	6
AP11AL	ALUMINIUM	4,5	769						
AP16ST	STAINLESS STEEL	16,6	950	Ø8	876	428	443	12	6
AP16GZ	HOT-DIP GALVANIZED	16,3						15	8
AP16AL	ALUMINIUM	6,9	933						
AP20ST	STAINLESS STEEL	19,8	1121	Ø8	955	467	482	12	6
AP20GZ	HOT-DIP GALVANIZED	19,4						15	8
AP20AL	ALUMINIUM	8,2	1116						
AP27ST	STAINLESS STEEL	27,2	1217	Ø12	1004	491	506	15	8
AP27GZ	HOT-DIP GALVANIZED	26,8						20	10
AP27AL	ALUMINIUM	11,9	1195						
AP31AL	ALUMINIUM	13,7	1369	Ø12	1075	525	540	20	10
AP50AL	ALUMINIUM	16,5	1654	Ø12	1180	577	595	20	10
AP60AL	ALUMINIUM	20,0	2005	Ø12	1298	635	655	20	10



**ANKERPLEX<sup>®</sup>**  
KEEPING THE POSITION

## SIZE GUIDE ACCORDING TO CONDITIONS AND LENGTH

MODEL	MATERIAL	WEIGHT (KG)	DINGHY KAYAK	5.5M 18'	6.5M 21'	7.5M 23'	9M 30'	10M 33'	11M 36'	12M 39'	13M 42'	14M 46'	15M 50'	17M 56'	20M 65'	22M 72'
AP1ST	STAINLESS STEEL	1,5	•••	•												
AP1GZ	HOT-DIP GALVANIZED	1,5	•••	•												
AP5ST	STAINLESS STEEL	5,1		•••	•											
AP5GZ	HOT-DIP GALVANIZED	5,0		•••	•											
AP5AL	ALUMINIUM	1,7	•••	•												
AP8ST	STAINLESS STEEL	8,0		•••	•••	•										
AP8GZ	HOT-DIP GALVANIZED	7,8		•••	•••	•										
AP8AL	ALUMINIUM	2,6		•••	•••	•										
AP11ST	STAINLESS STEEL	11,4					•••	•••	•							
AP11GZ	HOT-DIP GALVANIZED	11,2					•••	•••	•							
AP11AL	ALUMINIUM	4,5					•••	•								
AP16ST	STAINLESS STEEL	16,6							•••	•						
AP16GZ	HOT-DIP GALVANIZED	16,3							•••	•						
AP16AL	ALUMINIUM	6,9						•••	•							
AP20ST	STAINLESS STEEL	19,8							•••	•••	•					
AP20GZ	HOT-DIP GALVANIZED	19,4							•••	•••	•					
AP20AL	ALUMINIUM	8,2							•••	•						
AP27ST	STAINLESS STEEL	27,2									•••	•••	•			
AP27GZ	HOT-DIP GALVANIZED	26,8									•••	•••	•			
AP27AL	ALUMINIUM	11,9								•••	•••	•				
AP31AL	ALUMINIUM	13,7									•••	•••	•			
AP50AL	ALUMINIUM	16,5										•••	•••	•••	•	
AP60AL	ALUMINIUM	20													•••	•••



AS AN EXCLUSIVE STORM ANCHOR IT'S ADVISABLE A SIZE LARGER THAN THE RECOMMENDED

THIS GUIDE GIVES RECOMMENDATIONS FOR CHOOSING THE APPROPRIATE MODEL BASED ON THE WEATHER CONDITIONS AND THE LENGTH OF THE BOAT. CONSIDERING AN AVERAGE DISPLACEMENT, STRUCTURE EXPOSED TO THE WIND AND QUALITY OF THE SEA BOTTOM. AND PROCEEDING ACCORDING TO THE "INSTRUCTIONS FOR USE" PUBLISHED BY ANKERPLEX<sup>®</sup>. THESE RECOMMENDATIONS ARE BASED ON THE MANUFACTURER'S EXPERIENCE. FIELD TESTS CARRIED OUT AND SPECIALIZED PUBLICATIONS. THERE MAY BE STANDARDS AND REGULATIONS IN YOUR COUNTRY THAT DETERMINE THE WEIGHT AND CHARACTERISTICS OF THE ANCHORING EQUIPMENT ON YOUR BOAT THAT MUST BE OBSERVED. PLEASE REMEMBER THAT THE CONDITIONS OF USE MAY VARY SIGNIFICANTLY IN THE PRESENCE OF CURRENTS, WAVES, ETC... LIKEWISE, THE HOLDING POWER OF AN ANCHOR CAN VARY CONSIDERABLY DEPENDING ON THE QUALITY OF THE BOTTOM.